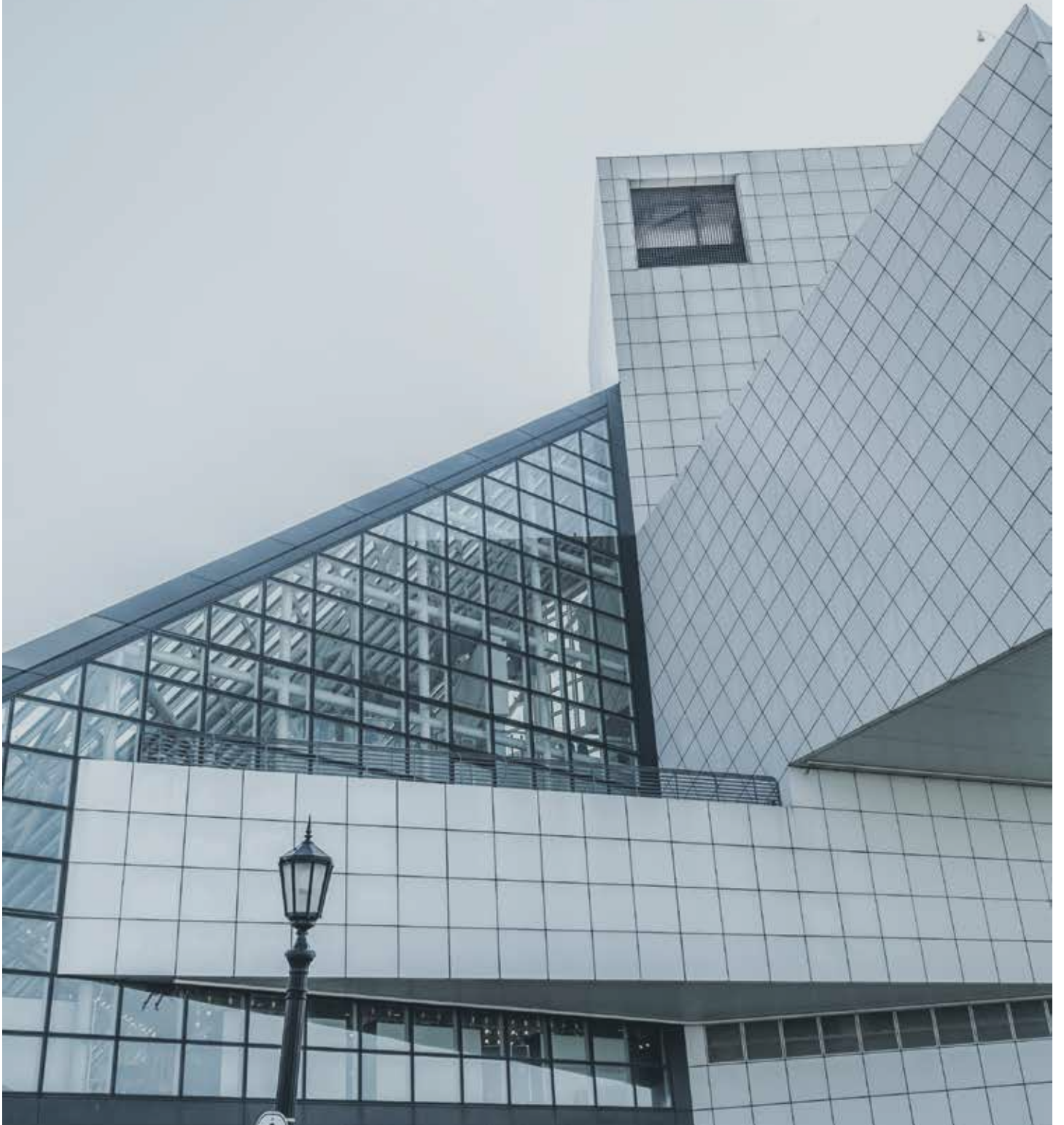


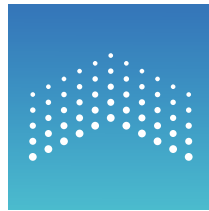
سیال  
SAYAL



SAYAL Engineering Consultancy Company



سيال  
SAYAL





## Who we are?

Because we are keenly aware of the customer's need for a distinguished unique service, we want to be different from the rest, as we have a strong belief that survival is for the best to achieve the honor of staying on the top of the list of known distinguished firms.

SAYAL is an emerging service consulting firm consists of a group of Engineering Offices and facilities that are combined by a professional partners with over 30 years of experience in different fields comprising a group of expert partners based in Yanbu Governorate. And its services are extendable to cover areas outside its location in and out of Kingdom.

SAYAL provides a range of quality engineering consulting services in various sectors such as: Engineering Consultancy Sector, Design & Planning and Support Services Sector. Also extends its services to cover the local, regional and international markets in line with international standards and following the latest methods of engineering work around the world through an integrated team of experts in engineering.

SAYAL cooperates with local and international engineering companies in specialized sectors to provide a distinctive service to its customers.

SAYAL services have an expert touch which explains the increased demand.



# Vision

**We aspire to be one of the leading pioneers in engineering consultancy.**



# Mission

**To achieve the client's wishes and continuous communication with him to provide the highest quality services and professionalism in accordance with international standards using modern technologies and programs and experts.**





## Our values

SAYAL is not just a traditional provider of services.

Our company is committed to abide by the terms of the agreement and the implementation of the initial conditions for the purpose of project dedication and perfection.

We are distinguished by a set of values that make us unique to regional and international services:

**Excellence:** Our services are distinctive because they are based on creativity and innovation, and we build our projects on exact knowledge and this made of Sayal an attractive environment for customers and employees.

**Responsibility:** One of our values is to open the way for localization and exchange of experiences in addition to supporting safety, environmental protection, social responsibility and the work environment.

**Commitment:** We are an integrated team of experts and our services are characterized by the spirit of integrity and justice, teamwork, quality, and respect for time.

**Loyalty:** We value customers' need for support and that's what we embody through customer care and support.





## **Our Goals**

**SAYAL is not just a limited-scope company but a cohesive network of closely interrelated services that make it a solid company in which projects are integrated to produce the highest results. Sayal's objectives include:**

- 1 ■ Provide solutions that combine speed and efficiency in our areas of specialization and diversify alternatives for customers to obtain high quality services.**
- 2 ■ Comprehensive development of services and periodic update.**
- 3 ■ Continuous and fruitful communication with the clients and their awareness and education to expand the customer base and comprehensive coverage of projects.**
- 4 ■ Opening new horizons for dealing in the fields of engineering in the Arab world and expanding channels of communication with our customers in a way that ensures that they can get the best service in the shortest time.**
- 5 ■ Approach all customer categories and open up constructive dialogue with them.**

# Chief Executive Officer's Message

---

The practical reach of the Kingdom's aspirations through its comprehensive vision in 2030 requires the presence of giant engineering companies that bear the technical and engineering footprints of the experts, providing professional, high quality and international consultancy services can ensure optimal implementation of projects, serving citizens and customers and aspiring for a positive future. Based on this vision, we have been working as a leading consultancy in the field of engineering consulting in our geographical area. We provide professional services in accordance with international standards and customer satisfaction is a starting point and goal. We strive to educate the customer and move smoothly and flexibly from the stage of thought towards the stage of actual application. We offer the widest choice to our customers and bring them all new in our areas of specialization.

**Eng / Abdul Salam Salem Shokr**  
**Chief Executive Officer**



# Our Services

---

SAYAL offers a variety of services that are based on the needs of customers and their interests including:

## **Engineering Consultancy, Design & Planning and Support Services**

SAYAL also cooperates with local and international engineering offices and companies in the specialized sectors in order to provide outstanding service to our customers.

Our services also include:

### Engineering Consultancy

Mechanical Engineering

Architecture

Civil Engineering

Electrical engineering

Instrumentation and control engineering

### Engineering Design

Conceptual designs and drawings

Preliminary designs and drawings

Graphics and executive drawings

Detailed engineering designs and drawings

Technical specifications and bill of quantities

As built drawings

Interior design

### Planning & Studies

Feasibility studies

Cost estimates

Master plans

Scope of work

Technical reports

Environmental studies

### Engineering and Industrial Works

Technical support

Provide qualified professionals

## Project management

Project planning and scheduling

Preparation of specifications and tender documents

Contract document preparation

Assistance in negotiation of contracts

Tender evaluation and evaluation reports

Project Monitoring and Control

Project Cost Estimating

Manage projects

## Project execution

Manufacturer Record Books

Delivery and closure of the project

Review costs and project scheduling

safety and security on site

Design and Materials Review

Project Monitoring and Control

Document Management

Project Supervision

Testing and Commissioning

## Operation and Maintenance

Supervision and providing of manpower

personnel Training

Operation and maintenance manuals

Financial cost

Prepare and review the operation and maintenance plan

Technical advice

## Quality assurance and control

Review QA/QC programs for materials and equipment

Preparation of inspection and testing plans

Preparation of QA/QC programs

# Executives





## Eng. Yousif Jaid Al-Hujaili

Chairman of Board of Directors

Bachelor of Civil Engineering

Classification of SCE  
Consultant Engineer

more than 36 years of experience in Development of Major Petroleum and Petrochemical Industrial City (Preparation of Master and infrastructure plans, Project Management, Development and Management of Public Services, Operations & Maintenance).



## Eng. Abdulsalam Salem Shokr

Chief Executive Officer

Bachelor of Mechanical Engineering

Classification of SCE  
Consultant Engineer

more than 36 years of experience in Management of Energy and Water Projects, Operation and Maintenance of Desalination Plants and Pipe Lines.



## Eng. Mohamed Hussein Moawadh

Executive Vice President for Support Services

Bachelor of Engineering and Computer Science

Classification of SCE  
Consultant Engineer - Expert/Arbitrator

more than 33 years of experience in Project management, Engineering, Planning, Maintenance and Training in Refining, Energy, Petrochemical and Steel Industries. Arbitrator in the international court for dispute resolution in London.



## Eng. Mohammed Ali AlShahrani

Executive Vice President for Administrative Affairs

Bachelor of Chemical Engineering

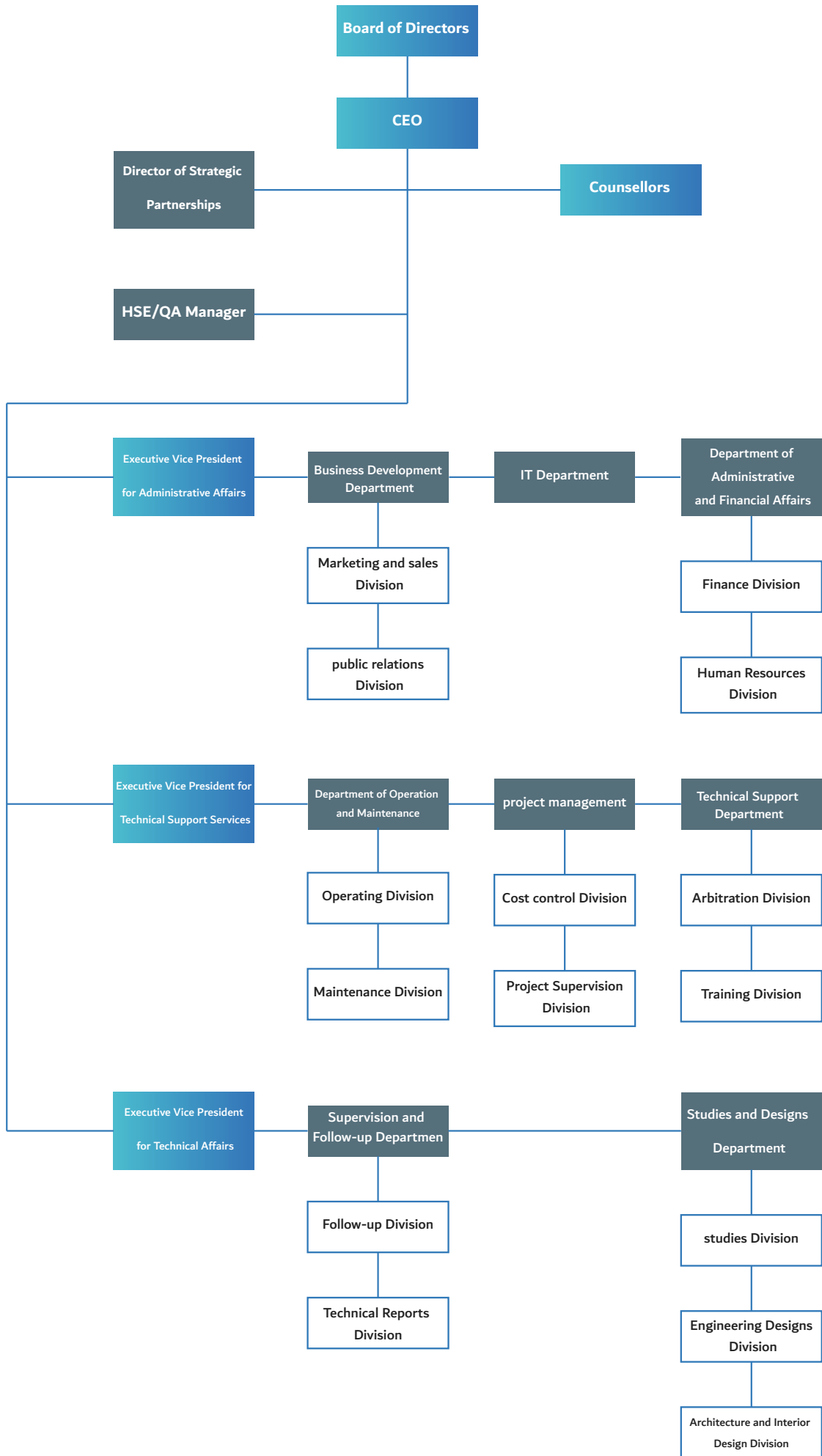
Classification of SCE  
Consultant Engineer

more than 38 years of experience in Projects Management of Petroleum and Petrochemical Industries, Leading Operation Processes, Rehabilitation Programs and Development Plans.

# Organization Chart







# Counsellors





## Eng. Mohammed Majid Kholousi

---

Consultant Engineer - Certified International Arbitrator

- Former President of Engineers Association - Egypt
- Certified International Arbitrator
- President of the Arab Arbitration Center
- Author of more than 63 books in construction and constructions including:
  - Soil Mechanics and Foundations
  - (Mosque building and style) was awarded the best book award for 1998
  - The architectural encyclopedia of one and ten parts
  - Principles of Perspective Drawing (Best Book Award 2003)
  - The basics of measurement, how to build your dwelling at the lowest cost and many more
- Lecturer of the training courses of the Arbitration Chamber of the Union of Engineering Associations in Islamic Countries
- Member of the Board of Directors of the Arab Bureau for Design & Engineering Consultants
- Member of the Board of Directors of the Arab Center for Arbitration
- Participate in arbitration in more than 100 engineering disputes as arbitrator or selected arbitrator
- He participated in the design and implementation of many engineering works in Egypt and the UAE
- Arbitration in more than 30 architectural competitions



## Dr. Khaled Sherbini

---

CEO of KSBUREAU Consultants that provided sustainable architectural, engineering solutions & completed design for more than 400 industrial/commercial projects.

- **PH.D. in Construction Engineering & Management – University of Waterloo, Canada.**
- **Master’s in Architecture – University of Miami, USA.**
- **Master’s in Architecture – University of Miami, USA.**
- **BARCH – King Fahad University of Petroleum & Minerals (KFUPM), KSA.**
- **Managing Director for a Real Estate Development Co. “DohaWestern”, Managing the development of a land with an area around 37 Million Sq.m.**
- **Consultant & General Manager for MACKEEN for Development Co., in Jeddah, KSA.**
- **Lecture in Architecture Department & participated in many administrative & technical committees – (KFUPM), KSA.**

# Our Strategic Partners





## KS Bureau Engineering Consultant

### About the Office:

KS Bureau Engineering Consultant is a full architectural and engineering consultant firm based in Saudi Arabia. Since it was founded, the firm had built an impressive portfolio of work for clients who are leaders in industrial, land development, commercial real estate, and corporate environments.

More than 2 million square meters of projects have been designed for over SR 3 billion in more than 400 projects

### Services:

- Planning
- Design
- Project management





## Sara Youssef Ba-Ashen Engineering Consulting

### About the Office

The company was established in 1978 by Architect Youssef Ba-Ashen in Jeddah. It started as an Architectural Design and Consulting Office run by young talented Saudi and Italian Architects who had one common background.

All of them graduated from renowned Polytechnic of Turin (Italy) and had a great passion to develop modern style architecture without totally breaking the traditional styles.

Since its foundation, Youssef Ba-Ashen Architectural Design and Consulting has been one of the leading A&E firm in Jeddah with a multinational work force of professionals.

This firm has worked on over 700 Preliminary Projects covering Architectural Designs, Engineering Services and Urban Planning.

A remarkable number of these projects were executed in the Kingdom and stand to witness achievements of their Designers.

Youssef Ba-Ashen Architectural Design and Consulting is currently handling a respectable number of industrial projects in the Royal Commission-Yanbu Industrial City, Rabigh Plustech Park (Petro Rabigh) and in King Abdullah Economic City (KAEC) in the Kingdom of Saudi Arabia.



# Contact

**SAYAL Engineering Consultancy Company**

**CR: 4700018114**

**License No. - Saudi Council of Engineers: 862**

**4276 King Abdulaziz Road - Al hadayiq District**

**Office No. 10**

**Yanbu 46424 – 7049**

**Kingdom of Saudi Arabia**

**+966 50 841 4005**

**+966 54 044 4020**

**Hello@sayal.net**

**www.sayal.net**

